



Algae Control in Ponds

- ✓ Eliminate up to 70-90% of the algae
- ✓ Reduce taste and odor problems
- ✓ Safe for fish, plants and other aquatic life



**AQUATIC
TECHNOLOGIES**

www.algae-control.com.au



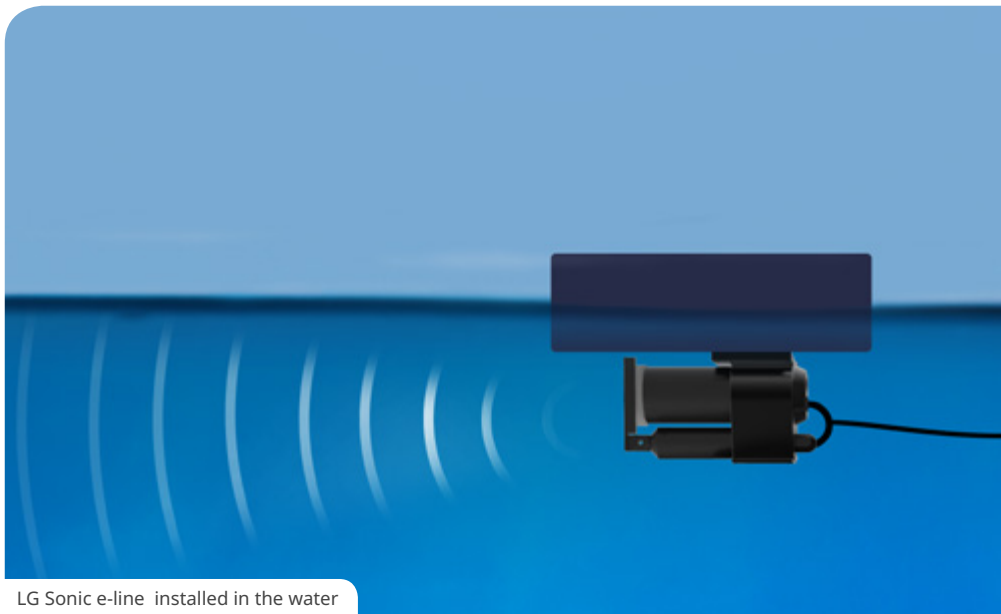
Algae Control in Ponds

The LG Sonic e-line provides an environmentally friendly solution to algae control through the use of ultrasonic sound waves.

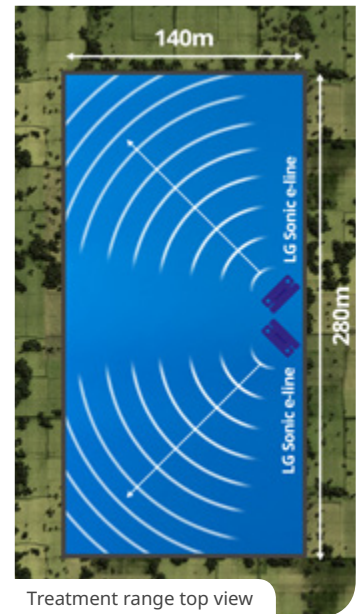
- ✔ Eliminate up to 70-90% of the algae
- ✔ Reduce taste and odor problems
- ✔ Safe for fish, plants and other aquatic life

Control Algae with Ultrasound

Specific ultrasonic sound waves based on Chameleon Technology™ can be used to control algae in ponds.



LG Sonic e-line installed in the water



Treatment range top view

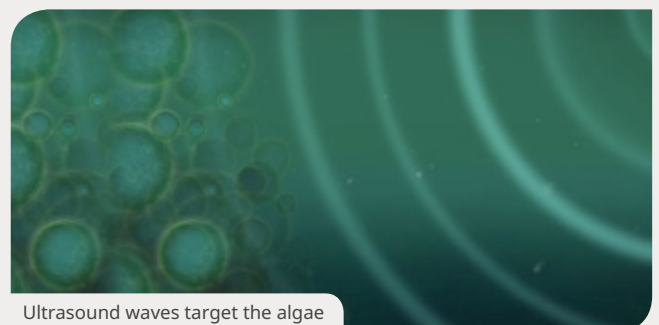
Each LG Sonic e-line system has an ultrasonic treatment range of up to 200 meters (650 feet)

How Ultrasound Targets Algae

Specific ultrasonic frequencies, waveforms and amplitudes can be utilised to directly target algae.

1. Ultrasound waves create a sound layer in the top layer of the water
2. The sound layer has a direct impact on the buoyancy of the algae
3. The algae cells sink to the bottom where they are unable to photosynthesize and eventually die due to a lack of light

LG Sonic products have been tested by various universities and are proven to be safe for fish, plants, zooplankton, and insects.



Ultrasound waves target the algae

[Learn more about ultrasonic](#)

LG Sonic Algae Control Products

LG Sonic e-line

The LG Sonic e-line can control algae using sound waves. The solution is to install one or multiple systems that transmit specific ultrasonic parameters depending on the type of algae.

- ✔ Specific ultrasonic parameters control algae up to 90%
- ✔ Integrated Aquawiper™ automatically cleans the ultrasonic transmitter
- ✔ Possible to treat multiple curved tanks or water surfaces with one control box



For larger water surfaces (from 200 meter/600 feet), LG Sonic offers the **MPC-Buoy solution**.

[Learn more about the LG Sonic e-Line](#)

Case study: Wholesale Nursery Growers

The challenge

In the late spring, the irrigation holding was suffering from a major outbreak of “filamentous algae”. The entire surface area of 3,880sqms had almost fully covered with thick filamentous algae. The filamentous algae bloom caused blockages to irrigation pumps & lines. With the summer period approaching, it was critical to have pumps and lines free and available to irrigate the nursery’s plants.

Applied product

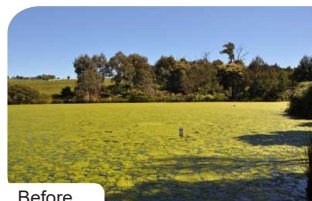


LG Sonic e-line

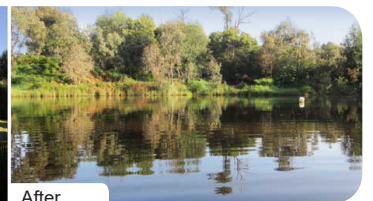
Client Comments

“The LG Ultra Sonic unit was installed the last week of November (beginning of Summer) and powered continuously 24/7. After 3 weeks, the algae was clearly seen to be affected by the Ultra Sonic unit. By the end of December, the algae had been reduced with only an estimated 10% remaining. By mid January, no algae was visible in the dam.

Considering the extent of this initial infestation at what was virtually the start of the Summer season, the performance of the Ultra Sonic unit was very impressive and continued to provide an algae free water supply.”



Before



After